



# Loveland Museum Expansion

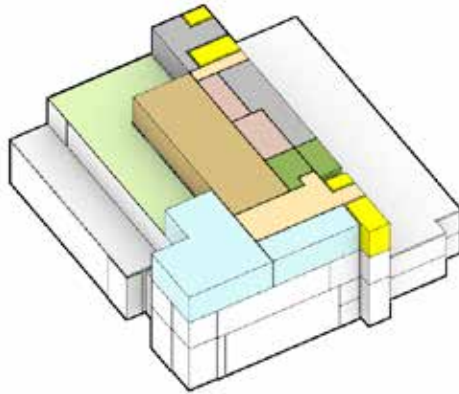
Concept Booklet





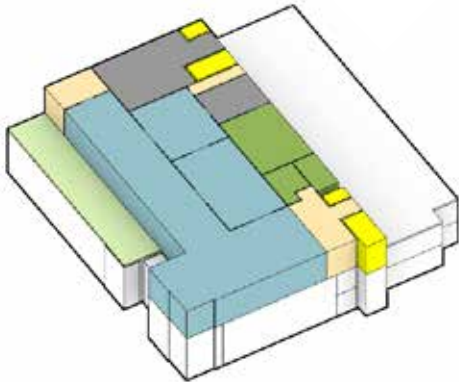
## *A New Downtown Destination* **Loveland Museum**

*The Museum expansion will bring a larger, up-to-date museum experience and a community gathering space where visitors can appreciate local history and enjoy the affirming influence of art.*



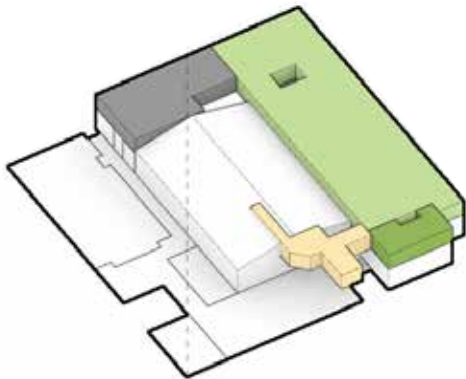
## 4th Level

- Rooftop Terrace
- Rentable Community Space
- Youth Engagement Pod



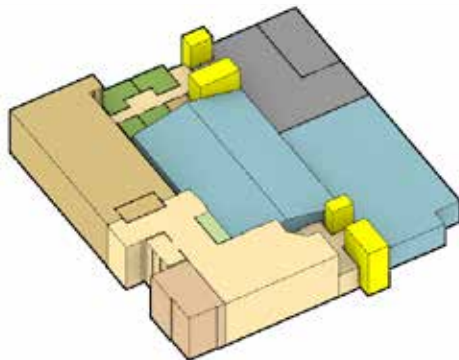
## 3rd Level

- Art Galleries
- Outdoor Sculpture Terrace



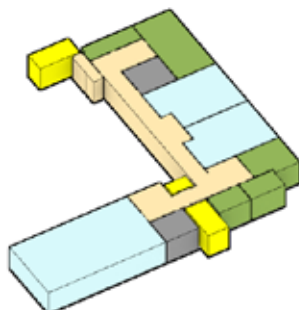
## 2nd Level

- Administration
- Conference Rooms
- Exhibition Workshop
- Mezzanine Gallery



## Street Level

- Reception Gallery
- History Galleries
- Auditorium
- Gift Shop



## Lower Level

- Classrooms
- Printmaking Studio
- Learning Labs

# Loveland Museum

## The Case for Expansion

- State-of-the-art exhibition spaces
- History galleries to feature more of your local history collection
- Expanded community event spaces, including a rooftop terrace
- Welcoming street presence
- Learning labs with classes for all ages
- Youth Engagement Pod with hands-on education
- Multimedia capabilities



# Loveland Museum History and Development

- Rooted in the Loveland community
- Located in the community's historic downtown
- Close to other cultural and civic landmarks, galleries, artist workshops and outdoor activities



1919

The Museum was started by author, collector, curator and mountain guide Harold Marion Dunning, who began collecting local pioneer artifacts and other items of interest as early as 1919.



1956

The Loveland Museum was erected in its place on the corner of Fifth and Lincoln and dedicated on November 24, 1956. An art gallery was added to the Museum in 1970.



1992

A major expansion project, doubling the size of the Museum building, was completed in 1992, providing increased areas for programs, art and history exhibits and collections.

## How We Got Here

The journey to the new Museum concept presented in this booklet has been complicated and has spanned a number of years. In 2010 the intended expansion site to the north was sold to make way for Gallery Flats, a catalyst project to bring more residences to Downtown Loveland. Sites to the south and the west were considered before the "aha" moment when we realized our current site could support the expansion with a vertical design. This design also eliminates the need for property acquisition, allowing resources to go directly to the Museum's construction. Community response to the design has been very positive.



1938

Beginning in 1938, the first Loveland Museum was located just west of the current building in a converted garage owned by Otto and Cora (Osborn) Timpke.



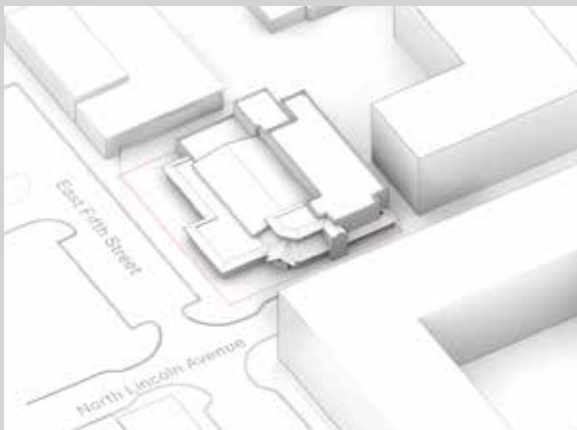
1946

The City of Loveland took over operations of the Museum in 1946. In 1953, the Timpkes both passed away, leaving their money and the inherited Osborn estate and property to the City of Loveland for the establishment of a museum. The Timpkes' brick home, built by pioneer settler William B. Osborn in 1878–1879, was torn down in 1954.



2005

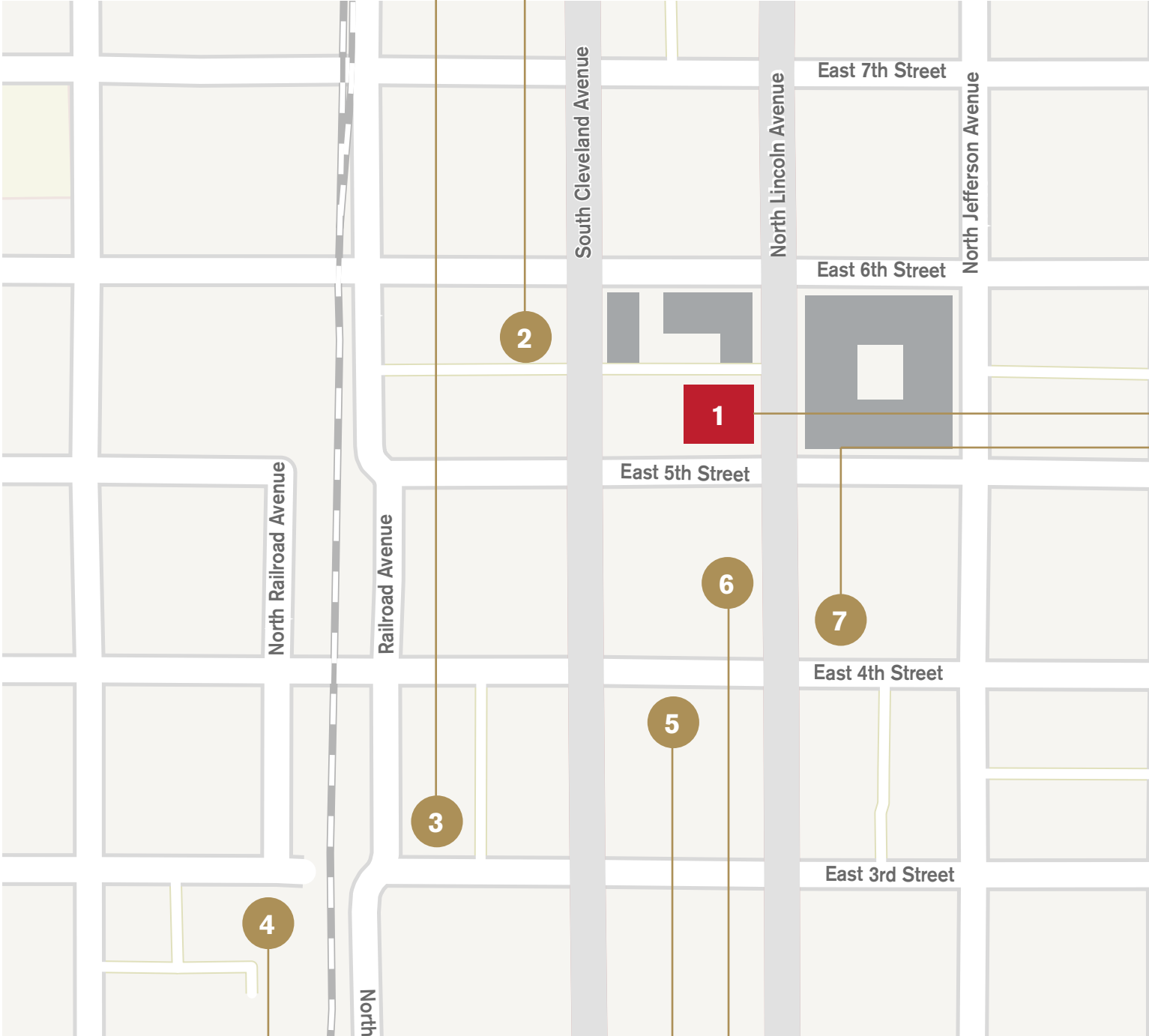
The current building above, current configuration below.



TBD

The future Loveland Museum above, configuration below.

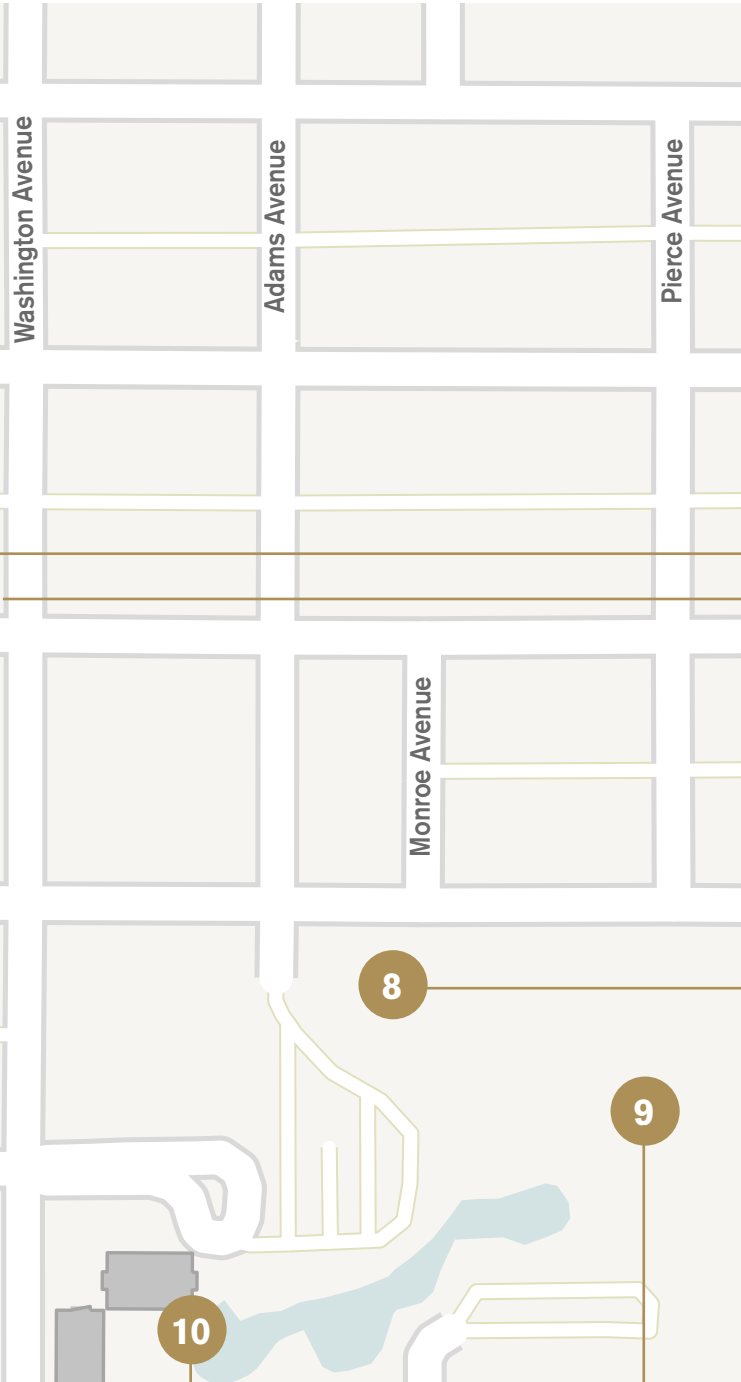




# Downtown Cultural District

Explore the downtown cultural amenities:

- 1 Loveland Museum
- 2 Pulliam Community Building
- 3 ArtWorks
- 4 Artspace
- 5 Rialto Theater Center
- 6 Thompson Valley Art League / Lincoln Gallery
- 7 Oddfellows Lodge/Old Opera House
- 8 Loveland Public Library
- 9 Chilson Recreation Center
- 10 Foote Lagoon





## Loveland Museum Collection & Exhibitions



- Wide variety of engaging history and art exhibits
- Local, national and international art exhibitions
- Local and regional history



First row left to right:

- *Cacti* by Katherine Warren from the exhibition *Xylem: Innovation in Botanical Art* (2015)
- Testing the painted ring of cold tar, possibly in the Flatiron penstocks, 1950, image used in *Tunnel Vision* exhibit 2017, from the Bureau of Reclamation Archive
- *Maya* from the exhibition *Persona: Portraits by Yuki Horikawa*
- (2017; *Blow-Up: Inflatable Contemporary Art* exhibition view (2017)

Second row:

- *Heron Rising* by Rosetta
- Miss Loveland Valentine, 1963, poses with Cowboy Cupid to promote Loveland's *Valentine Remailing Program*
- Salvador Dal, *Supremes of Lilliputian Malaises 37/50* (1971) from the exhibit *Les Dinners de Gala* (2018)

Third row:

- Bartolf Hose Cart Team, Champions of the Valley Tournament, 1888

Fourth row:

- *Reveries: Anna Skibska* (2015) installation view;
- Migrant workers harvesting sugar beets, c. 1937
- Children visiting General Store, Main Street Exhibit, during 2nd Grade History Days field trip, 2017
- View of exhibition *Wayne Thiebaud: Fifty Years of Painting* (2009)





## Loveland Museum's Potential

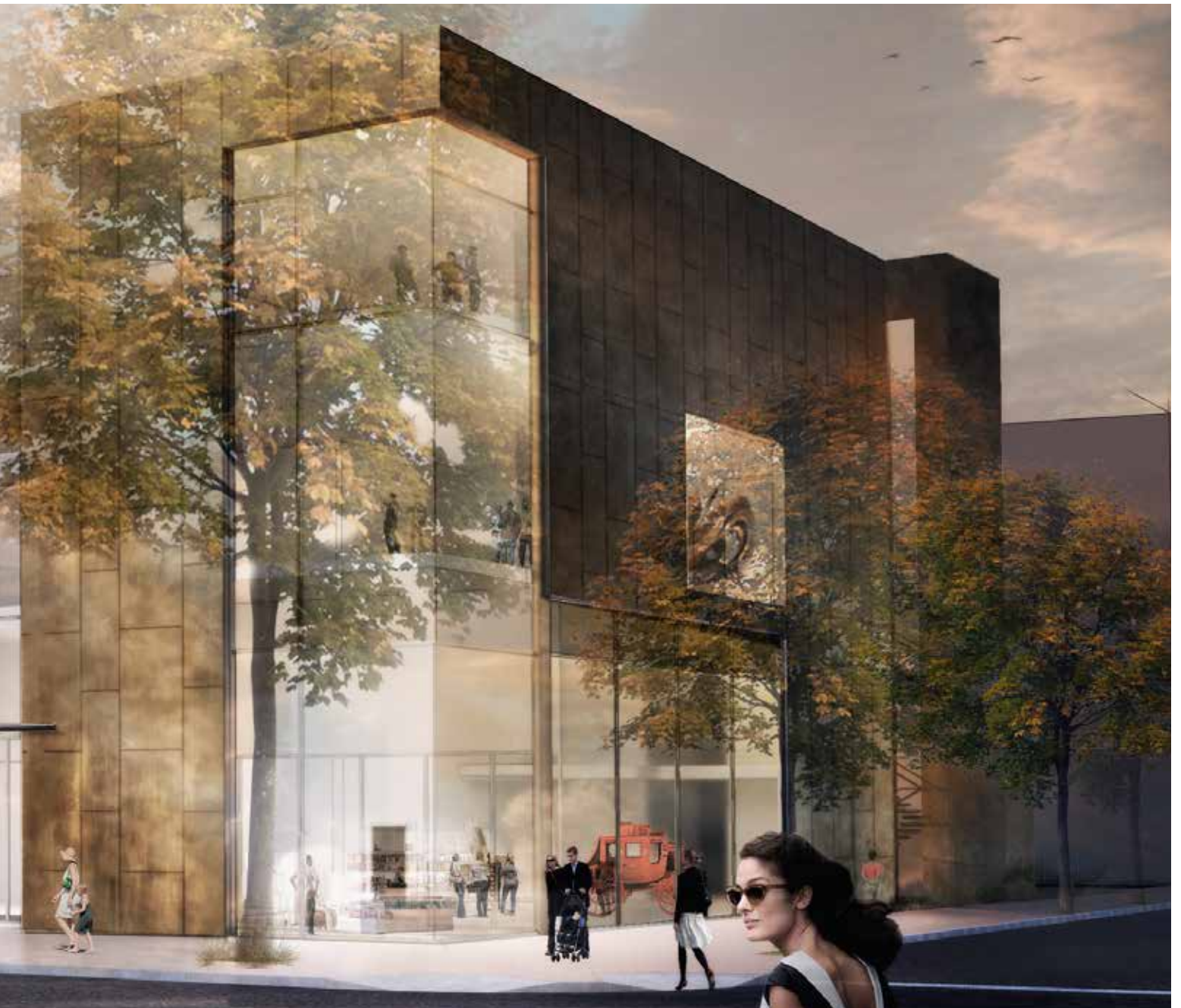
- Create a greater cultural and social hub for the community
- Enliven this central Loveland street corner
- An arts and history learning center for all ages
- Elements that bring art and history alive
- A variety of spaces for a number of cultural and social activities
- Auditorium with fixed seating for lectures and other staged events (250 seats)
- More flexible less formal spaces to be used for a variety of exhibits and community events
- Classrooms accommodating to all ages and abilities
- Rooftop garden terraces with outdoor sculptures
- Cafe space





## The New Building

- Welcoming and warm feel
- Variety of warm bronze textures in metal and glass
- Bronze finishes reflect Loveland's history of bronze casting
- Glass provides a reflective and transparent feel mirroring the layers of history within



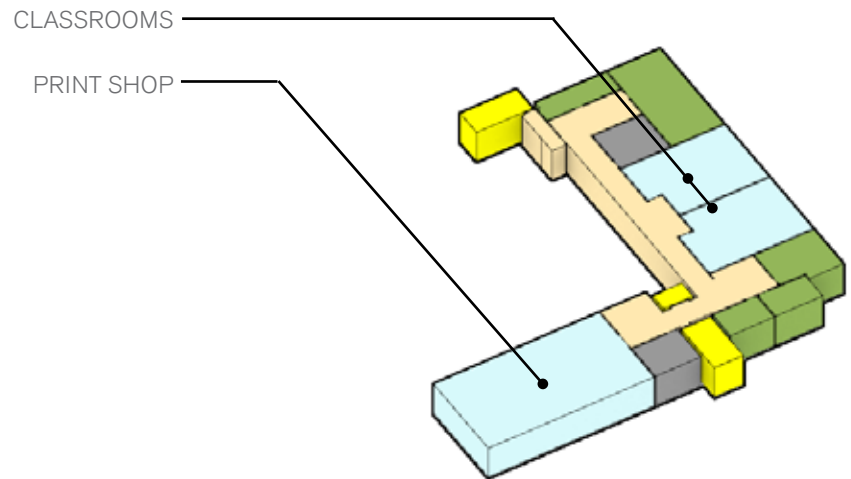




## THE LEVELS

### *Lower Level – Learning Level*

- An art and history learning center for all ages
- Printmaking studio
- Studio space for exploration and experimentation
- Comfortable and functional classroom space



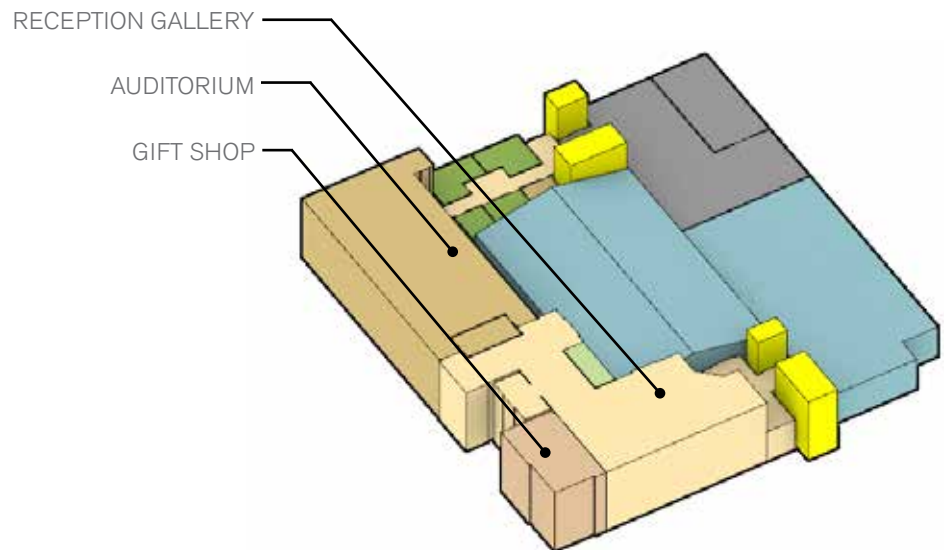




## THE LEVELS

### *Street Level— Community Interaction*

- Activate the street level
- Community gathering spaces
- Easily accessible auditorium for programs and after hours events
- Natural light
- Gift shop



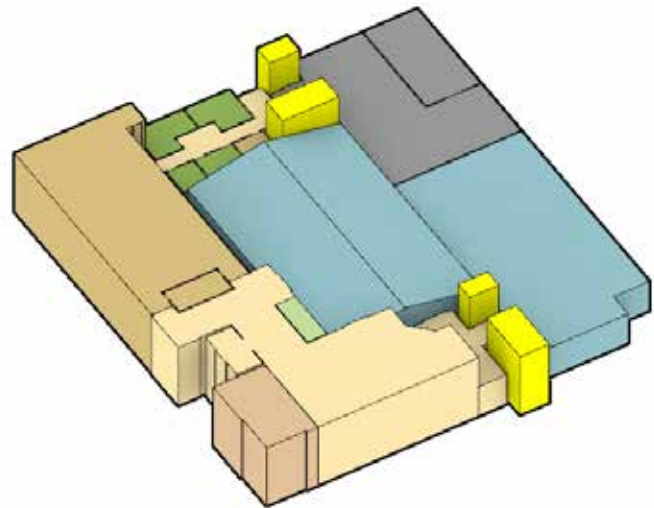




## THE LEVELS

### *Street Level — History Exhibitions*

- Focus on historical exhibits and collection
- Interactive, engaging exhibits
- Age of Bronze exhibit—the foundation of our arts community
- Bringing history to life



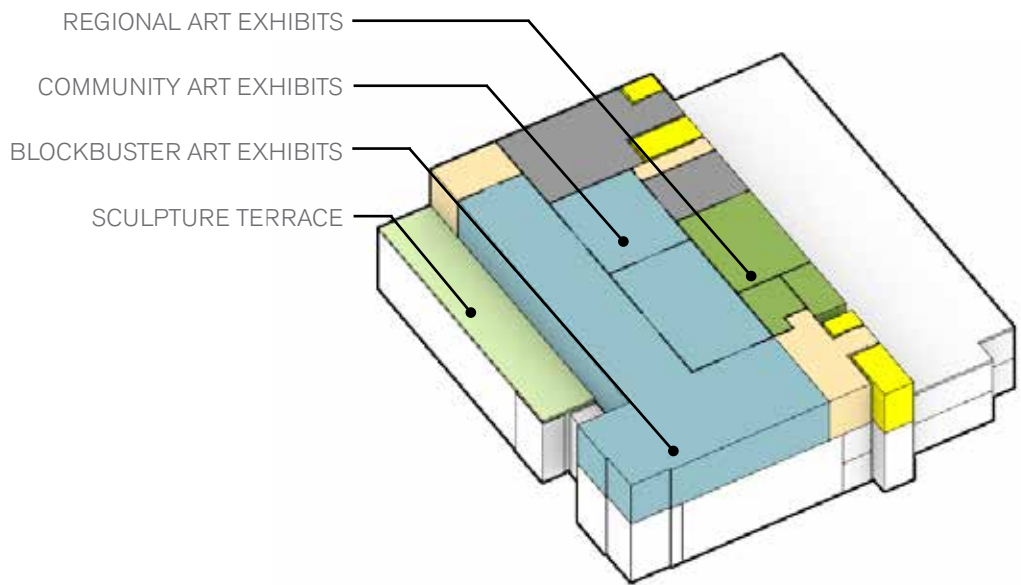




## THE LEVELS

### *3rd Level— Art Exhibitions*

- Modernized spaces
- Multi-media technology
- Showcase emerging and established artists
- Access to outdoor terrace



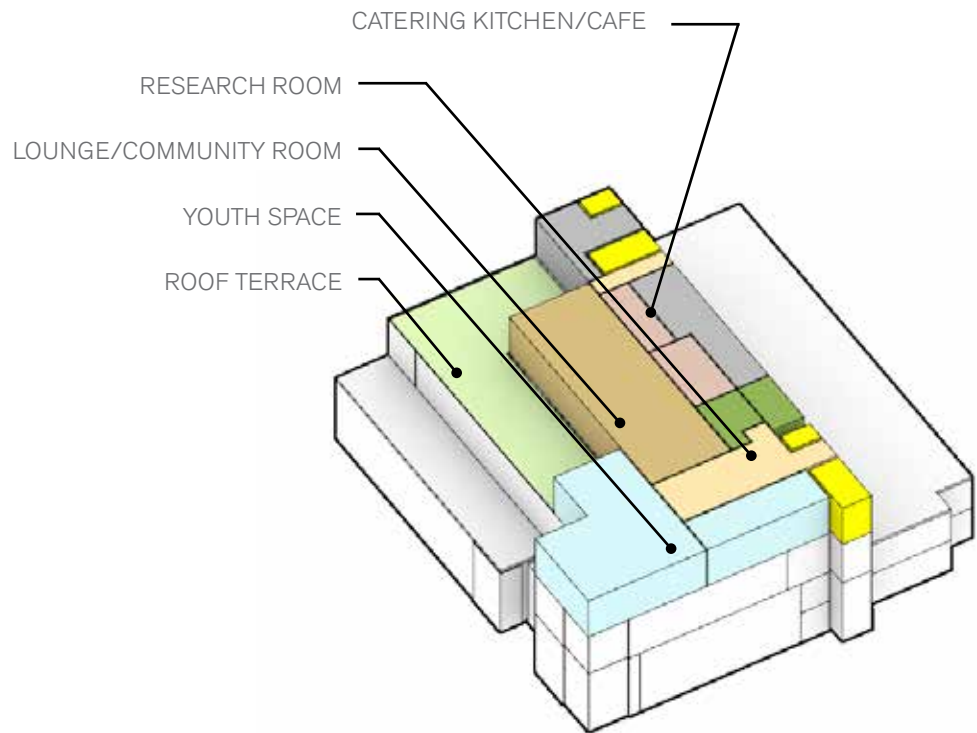


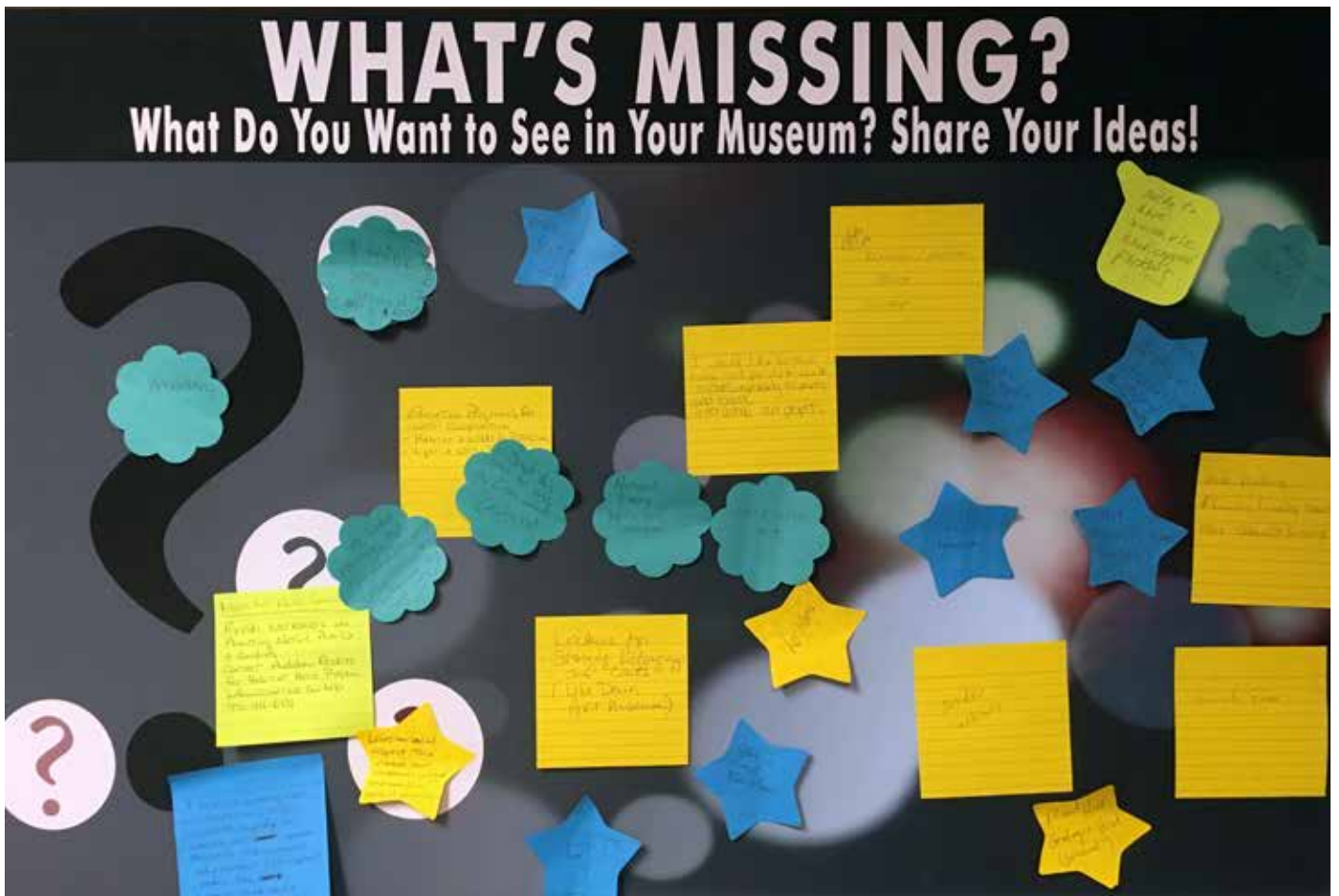


## THE LEVELS

### *4th Level— Indoor and Outdoor*

- Community gathering spaces
- Youth Engagement Pod
- Rentable amenities such as galleries, terraces, conference rooms, and cafe
- Outdoor terrace
- Cafe / catering kitchen
- Research room





## Loveland Museum Staff

Susan P. Ison  
Director of Cultural Services

Maureen Corey  
Curator of Art

Jennifer Cousino  
Curator of History

Jenni Dobson  
Curator of Education

Eric Franklin  
Exhibits Preparator

Tegan Hollen  
Business Services Specialist

Suzanne Janssen  
Public Art Manager

Jess Killingsworth  
Marketing Coordinator

Kimber Kreutzer,  
Executive Assistant

Michelle Standiford  
Graphic Designer

Ashley Yager,  
Registrar

## Cultural Services Board

Jan DesJardin, Chair  
Juanita Cisneros  
Dr. Dierdre Cook  
Heather Fortin Rubald  
Kris Ortmann  
Elizabeth Skowron  
Cornelia Winters

## Loveland Museum: Destination Downtown

Nothing compares to seeing something with your own eyes—an original work of art or an authentic historical object. The new Museum will open opportunities to engage with art and history.

A generation has passed since the Museum's last expansion in 1992. Open Houses were held early in 2017 to provide an opportunity for comments, wants, and wishes from the community. These ideas were included, as well as plans developed by staff and the Cultural Services Board. We are grateful for the thoughtful participation.

*For additional information, to share your thoughts on the plans, or to become active in efforts to build the new Museum, please contact:*

Susan Ison  
Cultural Services Director  
[susan.ison@cityofloveland.org](mailto:susan.ison@cityofloveland.org)  
970-962-2411





Olson Kundig